



Phone (800) 981-1540 | Fax (715) 254-0996  
 sales@kimobility.com | www.kimobility.com

Company: \_\_\_\_\_

Ship To: \_\_\_\_\_

Account Number: \_\_\_\_\_ Date: \_\_\_\_\_

Address: \_\_\_\_\_

Quote  PO Number: \_\_\_\_\_

City: \_\_\_\_\_ State: \_\_\_\_\_

RTS: \_\_\_\_\_

Zip: \_\_\_\_\_ Phone: \_\_\_\_\_

Marked For: \_\_\_\_\_

Email/Fax: \_\_\_\_\_

Effective 04/08/2019

### Axiom Back

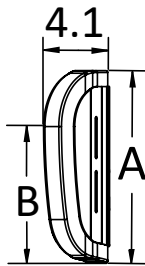
*Fill quantity and color modification code needed in the box corresponding with the size. See Color Modification Code Reference Chart at bottom of page for available colors. If no color mod code is listed, then standard Shadow Black will be used. Hardware is included with back. Low Back selections are not available with headrests. Weight capacity: 300 lbs.*

		Width							
		12"	14"	16"	18"	20"	22"		
Retail (Each)		\$555	\$555	\$555	\$555	\$555	\$791		
HCPC		E2613	E2613	E2613	E2613	E2613	E2614		
Height	Low	8"	Part Number	AXPB1208	AXPB1408	AXPB1608	AXPB1808	AXPB2008	
			Quantity						
			Color Mod Code						
		10"	Part Number		AXPB1410	AXPB1610	AXPB1810	AXPB2010	AXPB2210
			Quantity						
			Color Mod Code						
	12"	Part Number	AXPB1212	AXPB1412	AXPB1612	AXPB1812	AXPB2012		
		Quantity							
		Color Mod Code							
	Mid	14"	Part Number		AXPB1414	AXPB1614	AXPB1814	AXPB2014	AXPB2214
			Quantity						
			Color Mod Code						
16"		Part Number	AXPB1216	AXPB1416	AXPB1616	AXPB1816	AXPB2016		
		Quantity							
		Color Mod Code							
18"	Part Number		AXPB1418	AXPB1618	AXPB1818	AXPB2018	AXPB2218		
	Quantity								
	Color Mod Code								

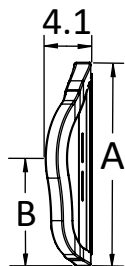
#### Color Modification Code Reference Chart <sup>1</sup>

Gloss Finish	Color Mod Code	Gloss Finish	Color Mod Code	Matte Finish	Color Mod Code	Matte Finish	Color Mod Code
Black	AXMBLK	Copper	AXMCOP	Army Green	AXMAGM	Royal Blue	AXMRBM
Blue Skies	AXMSKY	Granny Smith	AXMGSM	Charcoal Gray	AXMCGM	Smooth White	AXMSWM
Bubblegum Pink	AXMPNK	Metallic Fuchsia	AXMMTF	Emerald Green	AXMEGM		
Candy Blue	AXMCBL	Metallic Orange	AXMMOR	Iridescent Burgundy	AXMIBM		
Candy Purple	AXMPUR	Yellow	AXMYLW	Iridescent Navy	AXMINM		
Candy Red	AXMRED			Retro Red	AXMRRM		

<sup>1</sup> Extended lead time will apply



Axiom Posterior Back - Low



Axiom Posterior Back - Mid

Axiom Posterior Back Measurement Reference					
		Back Height	A	B	Shell Contour Depth
Height	Low	8"	10"	6.5"	2.25"
		10"	12"	8.5"	
		12"	14"	10.5"	
	Mid	14"	16"	8.5"	
		16"	18"	9.5"	
		18"	20"	10.5"	

HCPCS codes provided are based on code verification by the PDAC or our interpretation of the code definitions.

Proper use of HCPCS codes does not ensure coverage or payment. For coverage information, verify the appropriate payer's coverage policy.

**Axiom Back continued**

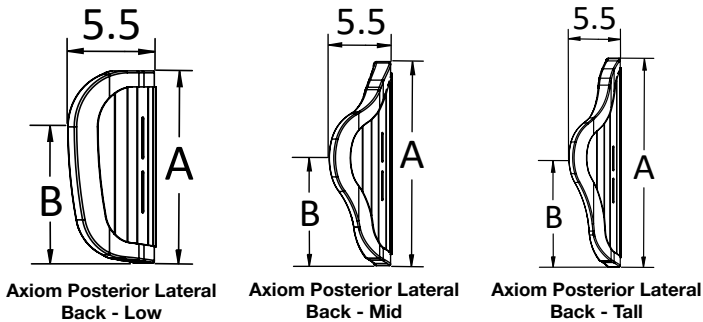
*Fill quantity and color modification code needed in the box corresponding with the size. See Color Modification Code Reference Chart at bottom of page for available colors. If no color mod code is listed, then standard Shadow Black will be used. Hardware is included with back. Low Back selections are not available with headrests. Weight capacity: 300 lbs.*

**Axiom Posterior Lateral Back (PL)**

		Width							
		12"	14"	16"	18"	20"	22"		
Retail (Each)		\$636	\$636	\$636	\$636	\$636	\$862		
HCPC		E2615	E2615	E2615	E2615	E2615	E2616		
Height	Low	8"	Part Number	AXPL1208	AXPL1408	AXPL1608	AXPL1808	AXPL2008	
			Quantity						
			Color Mod Code						
		10"	Part Number		AXPL1410	AXPL1610	AXPL1810	AXPL2010	AXPL2210
			Quantity						
			Color Mod Code						
	12"	Part Number	AXPL1212	AXPL1412	AXPL1612	AXPL1812	AXPL2012		
		Quantity							
		Color Mod Code							
	Mid	14"	Part Number		AXPL1414	AXPL1614	AXPL1814	AXPL2014	AXPL2214
			Quantity						
			Color Mod Code						
		16"	Part Number	AXPL1216	AXPL1416	AXPL1616	AXPL1816	AXPL2016	
			Quantity						
			Color Mod Code						
	18"	Part Number		AXPL1418	AXPL1618	AXPL1818	AXPL2018	AXPL2218	
		Quantity							
		Color Mod Code							
Tall	20"	Part Number	AXPL1220	AXPL1420	AXPL1620	AXPL1820	AXPL2020		
		Quantity							
		Color Mod Code							
	22"	Part Number		AXPL1422	AXPL1622	AXPL1822	AXPL2022	AXPL2222	
		Quantity							
		Color Mod Code							

Gloss Finish	Color Mod Code	Gloss Finish	Color Mod Code	Matte Finish	Color Mod Code	Matte Finish	Color Mod Code
Black	AXMBLK	Copper	AXMCOP	Army Green	AXMAGM	Royal Blue	AXMRBM
Blue Skies	AXMSKY	Granny Smith	AXMGSM	Charcoal Gray	AXMCGM	Smooth White	AXMSWM
Bubblegum Pink	AXMPNK	Metallic Fuchsia	AXMMTF	Emerald Green	AXMEGM		
Candy Blue	AXMCBL	Metallic Orange	AXMMOR	Iridescent Burgundy	AXMIBM		
Candy Purple	AXMPUR	Yellow	AXMYLW	Iridescent Navy	AXMINM		
Candy Red	AXMRED			Retro Red	AXMRRM		

<sup>1</sup> Extended lead time will apply



		Back Height	A	B	Shell Contour Depth
Height	Low	8"	10"	6.5"	3.65"
		10"	12"	8.5"	
		12"	14"	10.5"	
	Mid	14"	16"	8.5"	
		16"	18"	9.5"	
		18"	20"	10.5"	
	Tall	20"	22"	11.5"	
		22"	24"	12.5"	

**Axiom Back continued**

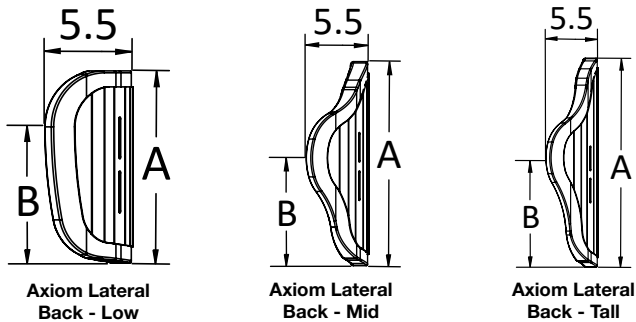
*Fill quantity and color modification code needed in the box corresponding with the size. See Color Modification Code Reference Chart at bottom of page for available colors. If no color mod code is listed, then standard Shadow Black will be used. Hardware is included with back. Low Back selections are not available with headrests. Weight capacity: 300 lbs.*

**Axiom Lateral Back (LB)**

		Width							
		12"	14"	16"	18"	20"	22"		
Retail (Each)		\$735	\$735	\$735	\$735	\$735	\$813		
HCPC		E2620	E2620	E2620	E2620	E2620	E2621		
Height	Low	8"	Part Number	AXLB1208	AXLB1408	AXLB1608	AXLB1808	AXLB2008	
			Quantity						
			Color Mod Code						
	10"	Part Number		AXLB1410	AXLB1610	AXLB1810	AXLB2010	AXLB2210	
		Quantity							
		Color Mod Code							
	12"	Part Number	AXLB1212	AXLB1412	AXLB1612	AXLB1812	AXLB2012		
		Quantity							
		Color Mod Code							
	Mid	14"	Part Number		AXLB1414	AXLB1614	AXLB1814	AXLB2014	AXLB2214
			Quantity						
			Color Mod Code						
16"	Part Number	AXLB1216	AXLB1416	AXLB1616	AXLB1816	AXLB2016			
	Quantity								
	Color Mod Code								
18"	Part Number		AXLB1418	AXLB1618	AXLB1818	AXLB2018	AXLB2218		
	Quantity								
	Color Mod Code								
Tail	20"	Part Number	AXLB1220	AXLB1420	AXLB1620	AXLB1820	AXLB2020		
		Quantity							
		Color Mod Code							
22"	Part Number		AXLB1422	AXLB1622	AXLB1822	AXLB2022	AXLB2222		
	Quantity								
	Color Mod Code								

Gloss Finish	Color Mod Code	Gloss Finish	Color Mod Code	Matte Finish	Color Mod Code	Matte Finish	Color Mod Code
Black	AXMBLK	Copper	AXMCOP	Army Green	AXMAGM	Royal Blue	AXMRBM
Blue Skies	AXMSKY	Granny Smith	AXMGSM	Charcoal Gray	AXMCGM	Smooth White	AXMSWM
Bubblegum Pink	AXMPNK	Metallic Fuchsia	AXMMTF	Emerald Green	AXMEGM		
Candy Blue	AXMCBL	Metallic Orange	AXMMOR	Iridescent Burgundy	AXMIBM		
Candy Purple	AXMPUR	Yellow	AXMYLW	Iridescent Navy	AXMINM		
Candy Red	AXMRED			Retro Red	AXMRRM		

<sup>1</sup> Extended lead time will apply



		Back Height	A	B	Shell Contour Depth
Height	Low	8"	10"	6.5"	3.65"
		10"	12"	8.5"	
		12"	14"	10.5"	
	Mid	14"	16"	8.5"	
		16"	18"	9.5"	
		18"	20"	10.5"	
	Tail	20"	22"	11.5"	
		22"	24"	12.5"	

**Axiom Back continued**

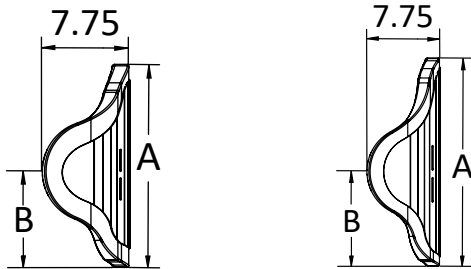
*Fill quantity and color modification code needed in the box corresponding with the size. See Color Modification Code Reference Chart at bottom of page for available colors. If no color mod code is listed, then standard Shadow Black will be used. Hardware is included with back. Low Back selections are not available with headrests. Weight capacity: 300 lbs.*

**Axiom Deep Lateral Back (DL)**

		Width							
		12"	14"	16"	18"	20"	22"		
Retail (Each)		\$735	\$735	\$735	\$735	\$735	\$813		
HCPC		E2620	E2620	E2620	E2620	E2620	E2621		
Height	Mid	14"	Part Number	AXDL1214	AXDL1414	AXDL1614	AXDL1814	AXDL2014	AXDL2214
			Quantity						
			Color Mod Code						
		16"	Part Number		AXDL1416	AXDL1616	AXDL1816	AXDL2016	
			Quantity						
			Color Mod Code						
	18"	Part Number	AXDL1218	AXDL1418	AXDL1618	AXDL1818	AXDL2018	AXDL2218	
		Quantity							
		Color Mod Code							
	Tail	20"	Part Number	AXDL1220	AXDL1420	AXDL1620	AXDL1820	AXDL2020	
			Quantity						
			Color Mod Code						
22"		Part Number		AXDL1422	AXDL1622	AXDL1822	AXDL2022	AXDL2222	
		Quantity							
		Color Mod Code							

Color Modification Code Reference Chart <sup>1</sup>							
Gloss Finish	Color Mod Code	Gloss Finish	Color Mod Code	Matte Finish	Color Mod Code	Matte Finish	Color Mod Code
Black	AXMBLK	Copper	AXMCOP	Army Green	AXMAGM	Royal Blue	AXMRBM
Blue Skies	AXMSKY	Granny Smith	AXMGSM	Charcoal Gray	AXMCGM	Smooth White	AXMSWM
Bubblegum Pink	AXMPNK	Metallic Fuchsia	AXMMTF	Emerald Green	AXMEGM		
Candy Blue	AXMCBL	Metallic Orange	AXMMOR	Iridescent Burgundy	AXMIBM		
Candy Purple	AXMPUR	Yellow	AXMYLW	Iridescent Navy	AXMINM		
Candy Red	AXMRED			Retro Red	AXMRRM		

<sup>1</sup> Extended lead time will apply



Axiom Deep Lateral Back - Mid

Axiom Deep Lateral Back - Tail

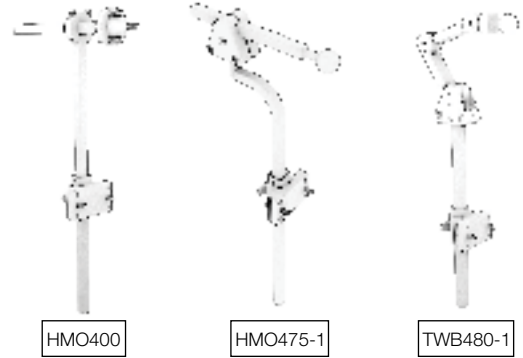
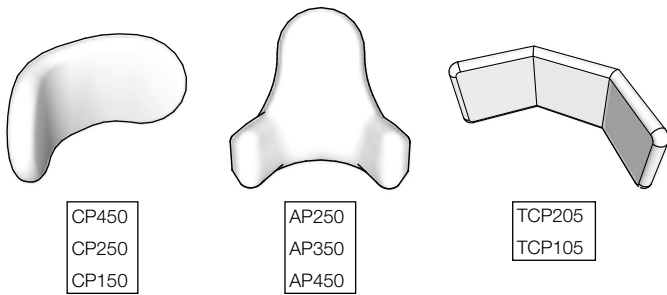
Axiom Deep Lateral Back Measurement Reference									
Height	Back Height	A	B <sup>1</sup>						Shell Contour Depth
			12"	14"	16"	18"	20"	22"	
			Mid		Tail		Tail		
	14"	16"	8.25"	8.25"	8.25"	8.25"	8.25"	8.25"	6"
	16"	18"	9.25"	9.25"	9.25"	9.25"	9.25"	9.25"	
	18"	20"	10.25"	10.25"	10.25"	10.25"	10.25"	10.25"	
	20"	22"	9.5"	9.75"	10"	10.25"	10.25"	10.5"	
	22"	24"	10.75"	11"	11.25"	11.5"	11.5"	11.75"	

<sup>1</sup> Measurement based on back width

## Axiom Back Accessories

### Headrest and Hardware

Fill quantity needed in the box corresponding with the headrest and hardware combination in chart below. Available only on Mid or Tall backs.



		Hardware										
		Standard Straight Back Mount Hardware with 1" Ball			Multi Axis Removable Hardware w/1" Horizontal Bar			Headrest Hardware with 1" Ball				
		HMO400			HMO475-1			TWB480-1				
	Description	Item Code	HCPC	Quantity	Kio Code	Retail (Each)	Quantity	Kio Code	Retail (Each)	Quantity	Kio Code	Retail (Each)
<b>Headrest Pad</b>	Comfort Plus Headrest 8"	<b>CP450</b>	E0955		HDR001	\$277		HDR009	\$313		HDR017	\$388
	Comfort Plus Headrest 10"	<b>CP250</b>	E0955		HDR002	\$277		HDR010	\$313		HDR018	\$388
	Comfort Plus Headrest 14"	<b>CP150</b>	E0955		HDR003	\$277		HDR011	\$313		HDR019	\$388
	Small All Positioning Headrest Pad and Ring Only	<b>AP250</b>	E0955		HDR004	\$277		HDR012	\$313		HDR020	\$388
	Medium All Positioning Headrest Pad and Ring Only	<b>AP350</b>	E0955		HDR005	\$277		HDR013	\$313		HDR021	\$388
	Large All Positioning Headrest Pad and Ring Only	<b>AP450</b>	E0955		HDR006	\$277		HDR014	\$313		HDR022	\$388
	Tri-Comfort Plus Headrest 14"	<b>TCP205</b>	E0955		HDR007	\$288		HDR015	\$324		HDR023	\$399
	Tri-Comfort Plus Headrest 19"	<b>TCP105</b>	E0955		HDR008	\$288		HDR016	\$324		HDR024	\$399

### Universal Mounting Hardware

For use with other manufacturer headrests

	Description	Quantity	Item Code	HCPC	Retail (Each)
<input type="checkbox"/>	Universal Mounting Plate		UMP	K0108	\$40

## Axiom Back Accessories continued

### Lateral Support

*Sold in pairs*

	Description	Quantity	Item Code	HCPC	Retail (Each)
<b>Laterals for Posterior Back</b>					
<input type="checkbox"/>	3 x 4 Lateral Pads with Fixed Mounting Hardware for Axiom Posterior Back		LF3x4P	E0956	\$305
<input type="checkbox"/>	4 x 5 Lateral Pads with Fixed Mounting Hardware for Axiom Posterior Back		LF4x5P	E0956	\$305
<input type="checkbox"/>	3 x 4 Lateral Pads with Swing Away Mounting Hardware for Axiom Posterior Back		LS3x4P	E0956, E1028	\$650
<input type="checkbox"/>	4 x 5 Lateral Pads with Swing Away Mounting Hardware for Axiom Posterior Back		LS4x5P	E0956, E1028	\$650
<b>Laterals for Posterior Lateral Back and Lateral Back</b>					
<input type="checkbox"/>	3 x 4 Lateral Pads with Fixed Mounting Hardware for Axiom Posterior Lateral and Axiom Lateral Backs		LF3x4L	E0956	\$305
<input type="checkbox"/>	4 x 5 Lateral Pads with Fixed Mounting Hardware for Axiom Posterior Lateral and Axiom Lateral Backs		LF4x5L	E0956	\$305
<input type="checkbox"/>	3 x 4 Lateral Pads with Swing Away Mounting Hardware for Axiom Posterior Lateral and Axiom Lateral Backs		LS3x4L	E0956, E1028	\$650
<input type="checkbox"/>	4 x 5 Lateral Pads with Swing Away Mounting Hardware for Axiom Posterior Lateral and Axiom Lateral Backs		LS4x5L	E0956, E1028	\$650

### Lumbar Pads

*Available only with Axiom Lateral Back and Axiom Deep Lateral Back*

	Description	Quantity	Item Code	HCPC	Retail (Each)
<input type="checkbox"/>	Lumbar Pad 12"		L12	K0108	\$48
<input type="checkbox"/>	Lumbar Pad 14"		L14	K0108	\$48
<input type="checkbox"/>	Lumbar Pad 16"		L16	K0108	\$48
<input type="checkbox"/>	Lumbar Pad 18"		L18	K0108	\$48
<input type="checkbox"/>	Lumbar Pad 20"		L20	K0108	\$48
<input type="checkbox"/>	Lumbar Pad 22"		L22	K0108	\$48

### Privacy Flap

	Description	Quantity	Item Code	HCPC	Retail (Each)
<input type="checkbox"/>	Privacy Flap 12"		PF12	K0108	\$45
<input type="checkbox"/>	Privacy Flap 14"		PF14	K0108	\$45
<input type="checkbox"/>	Privacy Flap 16"		PF16	K0108	\$45
<input type="checkbox"/>	Privacy Flap 18"		PF18	K0108	\$45
<input type="checkbox"/>	Privacy Flap 20"		PF20	K0108	\$45
<input type="checkbox"/>	Privacy Flap 22"		PF22	K0108	\$45

## Axiom Back Accessories continued

Therafin Posture Support					
	Description	Quantity	Item Code	HCPC	Retail (Each)
<input type="checkbox"/>	Small Static Therafit 2-Piece Chest Strap with H & L Adj and 1" Safety Strap		60153T	E0960	\$144
<input type="checkbox"/>	Medium Static Therafit 2-Piece Chest Strap with H & L Adj and 1" Safety Strap		60154T	E0960	\$144
<input type="checkbox"/>	Large Static Therafit 2-Piece Chest Strap with H & L Adj and 1" Safety Strap		60155T	E0960	\$144
<input type="checkbox"/>	Small Dynamic Therafit Chest Strap with Dual D-Ring Adjustment		60110T	E0960	\$113
<input type="checkbox"/>	Medium Dynamic Therafit Chest Strap with Dual D-Ring Adjustment		60111T	E0960	\$113
<input type="checkbox"/>	Large Dynamic Therafit Chest Strap with Dual D-Ring Adjustment		60112T	E0960	\$113
<input type="checkbox"/>	Small Dynamic Therafit Comfortfit Full Vest		30589T	E0960	\$167
<input type="checkbox"/>	Medium Dynamic Therafit Comfortfit Full Vest		30590T	E0960	\$167
<input type="checkbox"/>	Large Dynamic Therafit Comfortfit Full Vest		30591T	E0960	\$167
<input type="checkbox"/>	XLarge Dynamic Therafit Comfortfit Full Vest		30592T	E0960	\$167
<input type="checkbox"/>	XXLarge Dynamic Therafit Comfortfit Full Vest		30593T	E0960	\$167
<input type="checkbox"/>	Small Dynamic Therafit Comfortfit Trim Vest		30618T	E0960	\$169
<input type="checkbox"/>	Medium Dynamic Therafit Comfortfit Trim Vest		30619T	E0960	\$169
<input type="checkbox"/>	Large Dynamic Therafit Comfortfit Trim Vest		30620T	E0960	\$169
<input type="checkbox"/>	XLarge Dynamic Therafit Comfortfit Trim Vest		30621T	E0960	\$169
<input type="checkbox"/>	XXLarge Dynamic Therafit Comfortfit Trim Vest		30622T	E0960	\$169

## Axiom Back Modifications

*Extended lead times will apply*

Axiom Back Modifications					
	Description	Quantity	Item Code	HCPC	Retail (Each)
<input type="checkbox"/>	Modification for 4 Point Harness		AXM4PT	K0108	N/C
<input type="checkbox"/>	Modification for 2 Point Chest Strap		AXM2PT	K0108	N/C
<input type="checkbox"/>	Modification for Shoulder Guides <i>Includes shoulder guides</i>		AXMSG	K0108	\$50