



Phone (800) 981-1540 | Fax (715) 254-0996
 sales@kimobility.com | www.kimobility.com



Company:

Ship To:

Account Number:

Date:

Address:

Quote: PO Number:

City:

State:

ATP:

Zip:

Phone:

Marked For:

Email/Fax:

Associated Quote/Order#:

Effective: 1/5/2026

Catalyst 5Vx - Transit not Included [5VOPTTRN] _____ £1650
 300lb weight capacity

Frame

Seat Width	
14" [5VSWT014]	N/C
15" [5VSWT015]	N/C
16" [5VSWT016]	N/C
17" [5VSWT017]	N/C
18" [5VSWT018]	N/C
19" [5VSWT019]	N/C
20" [5VSWT020]	N/C
21" [5VSWT021]	N/C
22" [5VSWT022]	N/C

Transit Option	
Transit System (Weight Limit 300lbs) (E1022) [5VTRNOPT] _____	N/C
<i>Not available with 350 lb Weight Capacity</i>	
Omit [5VTRNOP2] _____	N/C

Cross Brace	
Standard Cross Braces [5VXBR001] _____	N/C
Seating System Cross Braces [5VXBR003] _____	£182
<i>Allows for easy attachment of seating system mounting hardware. Not available with Seat Sling.</i>	

Seat Depth	
14" [5VSDE014]	N/C
15" [5VSDE015]	N/C
16" [5VSDE016]	N/C
17" [5VSDE017]	N/C
18" [5VSDE018]	N/C
19" [5VSDE019]	N/C
20" [5VSDE020]	N/C

Seat Option	
Removable Aluminum Seat Pan [5VACC004] _____	£236
<i>Pan depth 1/2" shorter than Seat Depth</i>	

Weight Capacity	
300 lbs [5VSTD001] _____	£300
350 lbs (Heavy Duty) [5VHVD001] _____	£483
<i>Requires minimum 5" caster height</i>	

Backrest

Back Post / Height Range / Back Height						
Back Post	Price	Height Range	Back Height			
Standard [5VBOP002]	N/C	Short ^{1,2}	8.5" [5VBRH085]	9.5" [5VBRH095]	10.5" [5VBRH105]	11.5" [5VBRH115]
		Medium ²	12.5" [5VBRH125] ³	13.5" [5VBRH135]	14.5" [5VBRH145]	15.5" [5VBRH155]
		Tall	16.5" [5VBRH165]	17.5" [5VBRH175]	18.5" [5VBRH185]	19.5" [5VBRH195]
Half Folding [5VBOP029] ⁴	£86	Short	12.5" [5VBRH125]	13.5" [5VBRH135]	14.5" [5VBRH145]	15.5" [5VBRH155]
		Tall	16.5" [5VBRH165]	17.5" [5VBRH175]	18.5" [5VBRH185]	19.5" [5VBRH195]
Angle Adjustable w/Push Handle [5VBOP004]	N/C	Short ²	14" [5VBRH140]	15" [5VBRH150]	16" [5VBRH160]	
		Medium ²	16" [5VBRH160]	17" [5VBRH170]	18" [5VBRH180]	
		Tall	18" [5VBRH180]	19" [5VBRH190]	20" [5VBRH200]	

¹ Not available with Tension Adjustable Back Upholstery
² Not available with Standard Back Upholstery in combination with 21" and 22" Seat Widths
³ Not available with Tension Adjustable Back Upholstery in combination with 22" Seat Width
⁴ Not available with Standard Back Upholstery

Standard Back Post

Select option below only if a Standard Back Post option is selected

Straight with Push Handle [5VBCK004]	N/C
Straight without Push Handle [5VBCK008]	N/C
8 Degree Bend with Push Handle [5VBOP003]	£37
<i>Not available with Short Back Height Range</i>	
Straight with Fold Down Push Handle [5VBCK006]	£158
<i>Not available with 350 lb Weight Capacity</i>	
Caregiver Adjustable Height [5VBOP034]	£200
<i>Not available with Swing Away armrests. Available only with straight without push handle backrest.</i>	

Push Handle Options

Not available with Straight Back Post with Fold Down Push Handle or 350 lb Weight Capacity
 Low Profile Push Handle [5VBCK007] £67
2" shorter than standard push handles

Back Upholstery

If selecting both upholstery and Axiom Back, the upholstery will be installed

Standard [5VBUP001]	N/C
Tension Adjustable with Standard Cover [5VBUP002]	N/C
Tension Adjustable with Air Mesh Breathable Cover [5VBUP007]	£182
Omit [5VBUP003]	N/C

Footrest / Frame Type

Frame Type

Swing Away [5VFRM001]	N/C
Super Low - Swing Away [5VFRM002]	N/C
70° Fixed Front [5VFRM003]	N/C
80° Fixed Front [5VFRM004]	N/C

Footrest Hanger Type

Frame	Hanger	60°	70°	80°	90°	Retail
Swing Away	Extension Tube Mount	[5VHAN001]	[5VHAN002]	[5VHAN003] ¹		N/C
	Front Mount		[5VHAN016]	[5VHAN017] ¹	[5VHAN004] ¹	N/C
	Elevating Leg Rests ^{2,3}					[5VHAN048] N/C
	Pro Elevating Leg Rests ^{2,3}					[5VHAN044] £483
	Omit Hangers					[5VHAN046] N/C
Fixed	Extension Tube Mount		[5VFRM003]	[5VFRM004] ¹		N/C

¹ Not available with 7" or 8" casters

² Available only with Classic Hanger Release

³ Not available in combination with 24" wheels and Push to Lock Flush Mount Wheel Locks

Footrest / Extension / Seat to Footrest Length

Select Extension and Seat to Footrest Length in row corresponding to desired Footrest. Footrest Length of at least 2.5" shorter than Front Seat Height recommended. Extension Tube Hangers and Fixed Front Frame measurements are based on 70° Hanger / Front Frame Bend.

Footrest	Extension	Seat to Footrest Length											
		11"	11.5"	12"	12.5"	13"	13.5"	14"	14.5"	15"			
Extension Tube Hangers (60°, 70°, 80°)	Short [5VEXT002]	11"	11.5"	12"	12.5"	13"	13.5"	14"	14.5"	15"			
	Medium [5VEXT003]	13"	13.5"	14"	14.5"	15"	15.5"	16"	16.5"	17"			
	Long [5VEXT004]	15.5"	16"	16.5"	17"	17.5"	18"	18.5"	19"	19.5"			
Front Mount ¹ Hangers	Standard Selections									Requires 3" Extension			
	Short Front Mount Hanger (70°, 80°, 90°)	4" ²	4.5" ²	5"	5.5"	6"	6.5"				10"	10.5"	11"
		7"	7.5"	8"	8.5"	9"	9.5"				11.5"	12"	12.5"
	Medium Front Mount Hanger (70°, 80°, 90°)	4" ²	4.5" ²	5"	5.5"	6"	6.5"	7"	7.5"				
		8"	8.5"	9"	9.5"	10"	10.5"	11"	11.5"	12"	12.5"	13"	
	Long Front Mount Hanger (70°, 80°)	5"	5.5"	6"	6.5"	7"	7.5"	8"	8.5"	9"	14"	14.5"	15"
9.5"		10"	10.5"	11"	11.5"	12"	12.5"	13"	13.5"	15.5"	16"	16.5"	
ELR	Standard ELR Extension Tube Short (11.75" - 16.75") [5VEXT025]												
	Standard ELR Extension Tube Medium (13.75" - 18.75") [5VEXT030]												
	Standard ELR Extension Tube Long (16.25" - 21.25") [5VEXT031]												
PRO ELR Low Pivot Setting	Pro ELR Low Pivot Setting Short (12" - 18") [5VEXT021]												
	Pro ELR Low Pivot Setting Long (14.5" - 21.5") [5VEXT022]												
PRO ELR High Pivot Setting	Pro ELR High Pivot Setting Short (10.5" - 16") [5VEXT023]												
	Pro ELR High Pivot Setting Long (13" - 19.5") [5VEXT024]												
Fixed Front Frame (70°, 80°)	Short [5VEXT002]	11.5"	12"	12.5"	13"	13.5"	14"	14.5"	15"				
	Medium [5VEXT003]	13"	13.5"	14"	14.5"	15"	15.5"	16"	16.5"	17"			
	Long [5VEXT004]	15.5"	16"	16.5"	17"	17.5"	18"	18.5"	19"	19.5"			

¹ See Minimum Front Seat Height chart below

² Available with 90° front mount hangers

3" Extension

Available only with Front Mount Hangers

3" Extension [5VEXT008]	£49
3" Extension (Provided as Parts) [5VEXT018]	£49

Footplates

Composite [5VFPL001]	N/C
<i>Not available with Front Mount Hanger</i>	
Composite Angle Adjustable [5VFPL014]	N/C
<i>Not available with Front Mount Hanger or Seat Widths less than 16"</i>	
Aluminum Angle Adjustable [5VFPL002]	£170
One Piece Flip Up Angle Adjustable [5VFPL009]	£272
<i>Not available with Front Mount Hanger, ELR, or Pro ELR</i>	

Hanger Release

If no selection is made Classic Hanger Release will be used

Classic [5VREL001]	N/C
4-Way - In-Line [5VREL002]	N/C
4-Way - Out [5VREL003]	N/C

Minimum Front Seat Height with Front Mount Hangers						
Hanger Length	Short		Medium		Long	
	70°	80/90°	70°	80/90°	70°	80°
Hanger Bend						
Minimum Front Seat Height with Standard Selection	13.5"	13.5"	14"	15"	16"	17"
Minimum Front Seat Height with 3" Extension	14.5"	16"	16.5"	18"	18.5"	20"

Heel Loops

Not available with One Piece Flip Up Angle Adjustable Footplate

Heel Loops [5VACC008]	N/C
Adjustable Heel Loops [5VACC029]	£49
Omit Heel Loops [5VACC011]	N/C

Calf Straps

Velcro Adjustable [5VACC002]	N/C
Padded Velcro Adjustable [5VACC003]	£67
Padded Airmesh Calf Strap [5VACC010]	£103

ELR Pad and Pro ELR Cover

Pro ELR Gel Pad Cover (Pair) [5VELRPAD]	£304
<i>Available only on Pro ELR</i>	

Residual Limb Support

	Limb Support	Price	Omit	Cover		Pad Size				
Left	Left Limb Support	£170	Omit Left Hanger [5ORLS004]	Smooth [5VRLS006]	Air Mesh [5VRLS007]	5 x 8 [5VRLS008]	7 x 10 [5VRLS009]	9 x 10 [5VRLS010]	9 x 14 [5VRLS011]	11 x 10 [5VRLS012]
Right	Right Limb Support	£170	Omit Right Hanger [5VRLS005]	Smooth [5VRLS020]	Air Mesh [5VRLS021]	5 x 8 [5VRLS014]	7 x 10 [5VRLS015]	9 x 10 [5VRLS016]	9 x 14 [5VRLS017]	11 x 10 [5VRLS018]

Front Seat Height and Casters

Front Seat Height

Select Front Seat Height in row corresponding to desired caster size

Caster Size	Front Seat Height													
	Uses Super Low Front Frame													
4"	13.5"	14"	14.5"	15"	15.5"	16"	16.5"	17"	17.5"	18"	18.5"	19"	19.5"	20"
5"	14.5"	15"	15.5"	16"	16.5"	17"	17.5"	18"	18.5"	19"	19.5"	20"	20.5"	
6"	15.5"	16"	16.5"	17"	17.5"	18"	18.5"	19"	19.5"	20"	20.5"	21"		
7"	17"	17.5"		18"	18.5"	19"	19.5"	20"	20.5"	21"				
8"	17.5"	18"	18.5"	19"	19.5"	20"	20.5"	21"						

Castors

Caster Type		Caster Size					
		Price	4"	5"	6"	7"	8"
	.75" Rollerblade	N/C	[5VCAS004]				
	.75" Lighted Rollerblade	£81	[5VCAS005]				
	1.25" Soft Roll	N/C	[5VCAS006]	[5VCAS010]	[5VCAS014]	[5VCAS019]	[5VCAS020]
	1" Poly Aluminum	£96	[5VCAS007]	[5VCAS011]			
	1" Pneumatic	£103			[5VCAS017]		[5VCAS021]
	1.5" Soft Roll	N/C	[5VCAS032]	[5VCAS025]	[5VCAS026]		
	1.5" Soft Roll Aluminum	£96	[5VCAS009]	[5VCAS013]	[5VCAS016]		
	2" Poly	£79			[5VCAS024]		
	2" Pneumatic w/Foam Insert	£242					[5VCAS023]

Forks / Stems

- Best Fit [5VCST006] _____ N/C
Ki Mobility will pick Fork and Stem combination to optimize performance based on Caster Size and Front Seat Height
- Standard Fork Stem [5VCST001] _____ N/C
- 3/4" Longer Fork Stem [5VCST002] _____ N/C
- 1 1/2" Longer Fork Stem [5VCST003] _____ N/C
- Frog Legs Suspension Fork [5VCST013] _____ £344
Available only with 4", 5" or 6" Caster Sizes. Not available with Caster Pin Locks, 350 lb Weight Capacity, 2" Poly caster or 2" Pneumatic w/ Foam Insert caster.
- Frog Legs II Suspension System [5VCST014] _____ £424
Available only with 4", 5" or 6" Caster Sizes. Not available with Caster Pin Locks, 350 lb Weight Capacity, 2" Poly caster or 2" Pneumatic w/ Foam Insert caster.

Caster Housing

- Standard Housing [5VCSH001] _____ N/C
- Performance Housing [5VCSH002] _____ £37
Not available with 350 lb Weight Capacity

Fork / Stem Options

Frog Legs Options

- User Weight Under 80 lbs [5VCST004] _____ N/C
- User Weight 80-120 lbs [5VCST008] _____ N/C
- User Weight 120-160 lbs [5VCST009] _____ N/C
- User Weight 160-220 lbs [5VCST010] _____ N/C
- User Weight 220-260 lbs [5VCST011] _____ N/C
- User Weight 260-300 lbs [5VCST012] _____ N/C

Caster Pin Locks

- Caster Pin Locks [5VCST005] _____ £194
Not available with Performance Caster Housing, 1 1/2" Longer Fork Stem or Frog Legs Fork

Maximum Seat Dump Reference

(Front Seat Height minus Rear Seat Height)

Seat Depth	14"	15"	16"	17"	18"	19"	20"
Maximum Dump Standard Caster Housing	1.5"	2"	2"	2"	2.5"	2.5"	2.5"
Maximum Dump Performance Caster Housing	3"	3"	3"	3.5"	3.5"	4"	4"

Depending on configuration, chairs with Fixed Front Frame Type may achieve up to an additional .75"

Wheel Locks

Wheel locks

Push to Lock [5VWLK002]	N/C	Hemi Wheel Lock - Left (K0108) [5VWLK023]	£67
Push to Lock Flush Mount [5VWLK001]	£67	<i>Includes Extension Handle</i>	
Pull to Lock [5VWLK003]	N/C	Hemi Wheel Lock - Right (K0108) [5VWLK024]	£67
Low Profile Scissor Lock [5VWLK012]	£67	<i>Includes Extension Handle</i>	
<i>Not available with low poly or full poly tires</i>			
Drum Brake [5VWLK015]	£532	Omit [5VWLK007]	N/C
<i>Available only with 20", 22" and 24" MAXX Spoke wheels. Not available with Straight without Push Handle or Straight with Fold Down Push Handle Back Posts, or Low Profile Push Handle. Axle is Quick Release.</i>			
Dual - Drum Brake with Push to Lock [5VWLK016]	£653	Wheel Lock Options	
<i>Available only with 20", 22" and 24" MAXX Spoke wheels. Not available with Straight without Push Handle or Straight with Fold Down Push Handle Back Posts, or Low Profile Push Handle. Axle is Quick Release.</i>			
Dual - Drum Brake with Pull to Lock [5VWLK017]	£653	Extension Handles [5VWLK004]	£49
<i>Available only with 20", 22" and 24" MAXX Spoke wheels. Not available with Straight without Push Handle or Straight with Fold Down Push Handle Back Posts, or Low Profile Push Handle. Axle is Quick Release.</i>			
		<i>Available only with Push to Lock or Pull to Lock Wheel Locks</i>	
		Grade Aids [5VWLK009]	£145
		<i>Available only with Push to Lock Wheel Locks and Pneumatic or Pneumatic with Airless Insert tires</i>	

Rear Seat Height and Wheels

Rear Seat Height

Select Rear Seat Height in row corresponding to desired Wheel Size and Tire Profile. 14" Seat Depth not available with 24", 25" or 26" wheel sizes.

Wheel Size	Tire Profile	Rear Seat Height					
		11.5"	12.5"	13.5"	14.5"	15.5"	16.5"
20"	Low	11.5"	12.5"	13.5"	14.5"	15.5"	16.5"
	Full	12"	13"	14"	15"	16"	17"
22"	Low	12.5"	13.5"	14.5"	15.5"	16.5"	17.5"
	Full	13"	14"	15"	16"	17"	18"
24"	Low	13.5"	14.5"	15.5"	16.5"	17.5"	18.5"
	Full	14"	15"	16"	17"	18"	19"
25"	Low	14"	15"	16"	17"	18"	19"
26"	Low	14.5"	15.5"	16.5"	17.5"	18.5"	19.5"
	Full	15"	16"	17"	18"	19"	20"

Wheels

		Rear Wheel Size					
		Price	20"	22"	24"	25"	26"
Rear Wheel Type	Spoke	N/C		[5VWHE022]	[5VWHE024]		
	Mag	£182	[5VWH1220]	[5VWH1222]	[5VWH1224]		
	Maxx Spoke	N/C			[5VWH1124]		
	Maxx Spoke	N/C	[5VWH1120]	[5VWH1122]		[5VWH1125]	[5VWH1126]
	Superlight Spoke ¹	N/C			[5VWHE224]	[5VWHE225] ²	
	Spinergy Spox	£768		[5VWHE422]	[5VWHE424]	[5VWHE425]	[5VWHE426]

¹ Not available with 350 lb Weight Capacity

² Available only with Superlight and Plastic Coated Handrims

Spinergy Options

Select spoke color for Spinergy wheels

Black Spokes [5VSSC001]	N/C
Red Spokes [5VSSC002]	Blue Spokes [5VSSC005]
White Spokes [5VSSC003]	£91

Rear Tire Type

Full Profile

Street Pneumatic 1 3/8" [5VTIR001]	N/C
<i>Not available on 25" wheel size</i>	
Full Poly 1 3/8" [5VTIR002]	N/C
<i>Not available on Superlight wheel or 25" or 26" wheel sizes</i>	
Pneumatic with Airless Insert 1 3/8" [5VTIR004]	£110
<i>Not available on Superlight wheel or 25" or 26" wheel sizes</i>	
Schwalbe HS-127 1 3/8" [5VTIR017]	£110
<i>Available only on 24" wheel size</i>	

Low Profile

Low Poly 1" [5VTIR003]	£110
<i>Not available on Superlight wheel, 25" or 26" wheel sizes or 350 lb Weight Cap</i>	
Sentinel Solid Tire 1" [5VTIR005]	£110
<i>Not available on Superlight wheel</i>	
High Pressure 1" [5VTIR006]	N/C
<i>Not available on Mag wheel</i>	
Schwalbe Marathon Plus Evolution 1" [5VTIR010]	£110
<i>Not available on Mag wheel, 20" or 22" wheel sizes</i>	
Shox Solid Tire 1" [5VTIR019]	£110

Handrims

Standard Handrims

Aluminum Anodized [5VHRM001]	N/C
Superlight Aluminum Anodized [5VHRM010]	N/C
<i>Available only on 24" and 25" wheel sizes. Available only on MAXX Spoke or Superlight wheels.</i>	
Plastic Coated [5VHRM002]	£110
Projection (8 Vertical Projections) [5VHRM003]	£285
<i>Available only with full profile tires in combination with 22", 24", and 26" MAXX Spoke wheels, or 22" and 24" Mag wheels</i>	
Omit Handrim [5VHRM012]	N/C

Ergonomic Handrims

Not available with 20" or 26" wheels

Lite Regular Grip [5VHRM005]	£272
Standard Regular Grip [5VHRM008]	£272
Lite Extra Grip [5VHRM006]	£272
Standard Extra Grip [5VHRM009]	£272
Lite Omit Grip [5VHRM004]	£272
Standard Omit Grip [5VHRM007]	£272

Handrim Options

Handrim Mount

Close Mount [5VTAB001]	N/C
<i>Chair will come with Standard Mount unless Close Mount is selected. Reduces overall width by .75".</i>	

Micro-Grip

3M Micro Grip [5VACC006]	£91
--------------------------	-----

Axles

Axles

No selection needed with Drum Brake

Quick Release [5VAXO003]	N/C
Quad Quick Release [5VAXO001]	£127
<i>Not available with Mag or Spinergy wheels</i>	

Rear Wheel Camber

Combination of Standard and Adjustable Camber cannot exceed 4°. Selection will default to a max of 4° combined if exceeded.

Standard Camber

Chair will be set up with this camber selection

0° - Standard Camber [5VWC00]	1° - Standard Camber [5VWC10]
2° - Standard Camber [5VWC02]	3° - Standard Camber [5VWC11]
4° - Standard Camber [5VWC04]	N/C

Adjustable Camber

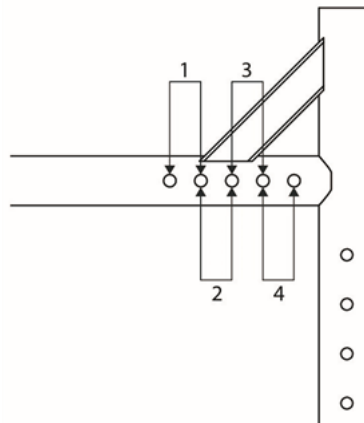
Extra camber spacers mounted to the inside of the rear frame for later use

0° - Adjustable Camber [5VWC16]	1° - Adjustable Camber [5VWC12]
2° - Adjustable Camber [5VWC13]	3° - Adjustable Camber [5VWC14]
4° - Adjustable Camber [5VWC15]	N/C

Center of Gravity Preset

If no selection is made position 3 will be used

Position 1 [5VCOG004]	Position 2 [5VCOG005]
Position 3 [5VCOG006]	Position 4 [5VCOG007] N/C



Armrests

Armrest Type	Length		Price
Height Adjustable T-Arm Tall (11.5"-15")	Desk	[5VARM039]	£212
	Full	[5VARM040]	
Height Adjustable T-Arm (8.5"-13.5")	Desk	[5VARM003]	£212
	Full	[5VARM004]	
Height Adjustable T-Arm Low (6.5"-10.5") ¹	Desk	[5VARM022]	£212
	Full	[5VARM023]	
Height Adjustable Flip Back T-Arm Tall (11.5"-15")	Desk	[5VARM041]	£224
	Full	[5VARM042]	
Height Adjustable Flip Back T-Arm (9.5"-13.5")	Desk	[5VARM029]	£224
	Full	[5VARM030]	

¹ Available only with Spinergy, Mag and MAXX Spoke Wheels. If requested configuration is unavailable, Standard Height T-Arm will be used.

² Not available with Seat Depths less than 16" or Angle Adjustable Back Posts

³ Not available with Angle Adjustable Back Posts, Arm Pads, or Half-Folding Back

⁴ Not available with 24" wheels and 15" or less Rear Seat Height. Not available with 22" Wheels and 14" or less Rear Seat Height.

Armrest Type	Length		Price
Flip Back (10.5") ^{2,4}	Desk	[5VARM009]	N/C
	Full	[5VARM008]	
Swing Away (10.5"-12.5") ³		[5VARM002]	£248
Swing Away with Side Guard (10.5" - 12.5") ³		[5VARM018]	£248
Omit Armrests		[5VARM007]	N/C

Arm Pads

Waterfall Arm Pad [5VARM020] £25
Available only with Height Adjustable T-Arm Tall, Height Adjustable T-Arm, and Height Adjustable T-Arm Low

Accessories

Removable Side Guard

Not available with T-Arms, Flip Back or Swing Away with Side Guard Armrests

Composite Side Guards [5VSDG002]	N/C
Aluminum Straight - Black Matte [5VSDG024]	£212
Aluminum Straight - Match Frame Color [5VSDG025]	£272
<i>Not available with Hydrographics</i>	
Fixed Mount Fender Side Guards - Aluminum [5VSDG012]	£303
<i>Not available with 24" wheel size in combination with 14" Rear Seat Height. Not available with standard back post in 8.5", 12.5", or 16.5" back heights.</i>	
Fixed Mount Fender Side Guards - Carbon Fiber [5VSDG011]	£393
<i>Not available with 24" wheel size in combination with 14" Rear Seat Height. Not available with standard back post in 8.5", 12.5", or 16.5" back heights.</i>	
Aluminum Adjustable Fender w/Foam Pad - Black Matte [5VSDG014]	£303
Aluminum Adjustable Fender w/Foam Pad - Match Frame Color [5VSDG015]	£303
<i>Not available with Hydrographics</i>	
Carbon Fiber Adjustable Fender [5VSDG013]	£393

Anti-Tip

Rear Anti-Tips [5VATP001]	£91
Swing-In Anti-Tip Single - Left [5VATP007]	£105
<i>Not available with 350 lb Weight Capacity. Not available with left side O2 Holder.</i>	
Swing-In Anti-Tip Single - Right [5VATP008]	£105
<i>Not available with 350 lb Weight Capacity. Not available with right side O2 Holder.</i>	
Swing-In Anti-Tip Pair [5VATP009]	£213
<i>Not available with 350 lb Weight Capacity. Not available with O2 Holder.</i>	
Omit [5VATP000]	N/C

Pelvic Positioning Belt

1 1/2" Auto Buckle Pelvic Positioning Belt [5VPOB001]	£68
1 1/2" Padded Auto Buckle Pelvic Positioning Belt [5VPOB002]	£151
2" Airline Buckle Pelvic Positioning Belt [5VPOB003]	£110
Small Flex-Mount Positioning Belt (16-24") [5VPOB007]	£188
Medium Flex-Mount Positioning Belt (19-29") [5VPOB008]	£188
Large Flex-Mount Positioning Belt (25-37") [5VPOB009]	£188
Belt Mounting Band Clamp [5VACC054]	£103
<i>Clamp includes hardware to mount Belt</i>	

Upper Extremity Support Tray

^{3/8"} Polycarbonate with ABS ribs. Hardware ordered separately. BC = Body Cut Out. Armrest assembly is required for tray mounting.

Tray	Fits Chair	Retail
Tray, Small 22" x 20" (BC 13" x 8") (E0950) [5VTRY002]	10" - 14"	N/C
Tray, Medium 24" x 22" (BC 15" x 9") (E0950) [5VTRY003]	12" - 16"	N/C
Tray, Large 26" x 24" (BC 17" x 10") (E0950) [5VTRY004]	14" - 18"	N/C
Tray, X-Large 28" x 26" (BC 18" x 10") (E0950) [5VTRY005]	16" - 20"	N/C
Tray Hardware Assy, Knob Release - Pair [5V123534]		N/C

Other Accessories

Tool Kit [5VACC005]	N/C
Removable Underseat Pouch [5VACC015]	N/C
Pediatric Ki Mobility Backpack [5VACC026]	£73
Ki Mobility Backpack [5VACC009]	£73
Luggage Carrier [5VACC025]	£73
<i>Not available with ELR, Pro ELR or Residual Limb Support</i>	
Black Neoprene Impact Guards [5VIMG001]	£86
Cane and Crutch Holder [5VACC007]	£91
IV Pole [5VACC022]	£260
<i>Available only with Standard Straight Back Posts</i>	
Tipping Lever - Left Side [5VACC034]	£34
<i>Not available with Transit Wheels or 350 lb Weight Capacity</i>	
Tipping Lever - Right Side [5VACC036]	£34
<i>Not available with Transit Wheels or 350 lb Weight Capacity</i>	
O2 Holder - Left Side [5VACC032]	£303
O2 Holder - Right Side [5VACC033]	£303
Transit Wheels [5VACC035]	£236
<i>Not available with Step Tube, Rear Seat Heights less than 14.5" or 350 lb Weight Capacity</i>	

Color

Touch-up paint available for purchase in the parts manual

Options	Price	Colors																			
		Gloss										Matte									
		Black	Ruby Red	Radiant Orange	Yellow	Electric Green	Rich Teal	Glacier Blue	Blue Steel	Deep Sapphire Blue	Purple Plum	Opalescent Violet	Dark Pink	Light Pink	Champagne	Shadow Black	Iridescent Navy	Bright Red	Tactical Green	Dry Earth Tan	Platinum
Frame	N/C																				
Color Accent Package ¹	N/C																				
Color Anodizing Package ²	Black	Blue	BrightGreen	Orange	Pewter	Pink	Purple	Red	Gold												
	N/C	£185	£185	£185	£185	£185	£185	£185	£185												

¹ Includes axle plates and forks. When Amputee Axle Plate is selected, only forks will be painted. When Frog Legs Suspension Fork or Frog Legs II Suspension System is selected, only axle plate will be painted.

² Select desired color. If no selection is made, black will be used. Includes standard caster housing, caster fork, and axle plates. Not available with 2" wide casters, Frog Legs Suspension Fork or Frog Legs II Suspension System. Not available with amputee axle plate. Extended lead-time may apply.

Hydrographics Options

Not available with Frame Color. Hydrographics Base Color required with Hydrographics. Zebra not available with Black.

Options	Price	Hydrographics						Hydrographics Base Color					
		AOR1 (Desert Digital Camo)	NEXT Camo	Pink Camo	Carbon Fiber	Muddy Girl	Zebra	Black	Blue	Grammy Smith	Pink	Purple	Red
Frame	£725												
Base Color	N/C												

Catalyst Front Seat Height Matrix																												
4" Caster				5" Caster				6" Caster				7" Caster				8" Caster												
FSH	Super Low	Stem	Fork	FSH	Super Low	Stem	Fork	FSH	Super Low	Stem	Fork	FSH	Super Low	Stem	Fork	FSH	Super Low	Stem	Fork									
15	13.5	Std	4"	16	14.5	Std	4"	17	15.5	Std	5"	18	16.5	Std	6"	19	17.5	Std	6"	6"								
15.5	14			16.5	15.5	3/4		17.5	16.5	3/4		18.5	17			19.5	18.5	3/4										
15.5 ¹	14 ¹			17.5	16	1 1/2		18.5	17	1 1/2		18.5	17.5			20.5	n/a	1 1/2										
16	14.5	3/4		5"	16	14.5	Std	5"	17	15.5	Std	6"	19	18		1 1/2	7"	19	17.5	Std	7"	7"						
16.5 ¹	15 ¹				16.5	15			17.5	16			18	16.5				19.5	18				20	18.5	19.5	18	20	18.5
17	15.5				16.5	15.5			17	16			17.5	16				18	17				19.5	18	19.5	18	20	19
15.5	14	Std	5"		17	16	3/4	5"	17.5	16.5	3/4	6"	18.5	17	Std	7"		20.5	19	3/4	7"	7"						
16	14.5				17.5	16			18	17			19.5	18				20	18.5				19.5	18.5	20.5	n/a	21	n/a
16	15				18	16.5			19	17.5			19.5	18				20	18.5				20.5	n/a	21	n/a		
16.5	15.5	3/4		5"	16.5	15	Std	5"	18.5	17	1 1/2		6"	19	17.5		1 1/2	7"	19	18	1 1/2	7"	7"					
17	15.5				17	15.5			18.5	17				19.5	18				20	18.5				20.5	n/a	21	n/a	
17.5	16				17.5	16			18.5	17				19.5	18				20	18.5				20.5	n/a	21	n/a	
16.5	15	Std	6"		17.5	16	3/4	6"	18	16.5	Std	7"		20	19	3/4	7"		20	19	1 1/2	7"	7"					
17	15.5				18	16.5			18.5	17				19.5	18				20	18.5				20.5	n/a	21	n/a	
17	16				18.5	17			19.5	18				20	18.5				20.5	19				21	n/a			
17.5	16.5	3/4		6"	18	16.5	1 1/2		6"	18.5	17.5		3/4	7"	19	18		1 1/2	7"	20.5	19	1 1/2	7"	7"				
18	16.5				18.5	17				19.5	18				20	18.5				20.5	19				21	n/a		
18.5	17				19	17.5				19.5	18				20	18.5				20.5	19				21	n/a		
18	16.5	Std	7"		18	16.5	Std	7"		19.5	18.5	3/4	7"		20	19	1 1/2	7"		20.5	19	1 1/2	7"	7"				
18.5	17				18.5	17				19.5	18				20	18.5				20.5	19				21	n/a		
18.5	17.5				19	17.5				19.5	18				20	18.5				20.5	19				21	n/a		
19	18	3/4		7"	18.5	17.5	3/4		7"	20	18.5	1 1/2		7"	20.5	19	1 1/2		7"	20.5	19	1 1/2	7"	7"				
19.5	18.5				19	18				19.5	18.5				20	19				20.5	19				21	n/a		
20	19				19.5	18.5				20	19				20.5	19				21	n/a							
19.5	18	1 1/2	7"		19.5	18	1 1/2	7"		6" x 2" caster not available with 5" fork					7"	20	18.5	1 1/2		7"	20.5	19	1 1/2	7"	7"			
20	19				20	18.5										20.5	19				21	n/a						
20.5	19				20.5	19										21	n/a											

¹ Not available with 4 x 1.5" Soft Roll Aluminum

Seat heights with "FSH" heading available with Standard Front Frame. Seat heights with "Super Low" heading available with Super Low Front Frame. Actual seat height may vary depending upon configuration.