



Phone (800) 981-1540 | Fax (715) 254-0996  
sales@kimobility.com | www.kimobility.com



Company:

Ship To:

Account Number:

Date:

Address:

Quote: PO Number:

City:

State:

ATP:

Zip:

Phone:

Marked For:

Email/Fax:

Associated Quote/Order#:

Effective: 1/10/2024

Catalyst 5Vx - Transit Included (K0005) \$2481

Catalyst 5Vx - Transit Not Included (K0005) \$2127

300 lb weight capacity

## Frame

### Seat Width

14"	N/C
15"	N/C
16"	N/C
17"	N/C
18"	N/C
19"	N/C
20" (E2201)	\$538
21" (E2201)	\$538
22" (E2201)	\$538

### Seat Depth

14"	N/C
15"	N/C
16"	N/C
17"	N/C
18"	N/C
19"	N/C
20" (E2203)	\$590

### Weight Capacity

300 lbs	N/C
350 lbs (Heavy Duty)	\$564

Requires minimum 6" caster height

### Transit Option

Transit System (Weight Limit 300lbs)	\$355
Not available with Removable Seat Pan or 350 lb Weight Capacity	
Omit	N/C

### Cross Brace

Standard Cross Braces	N/C
Seating System Cross Braces	N/C
Allows for easy attachment of seating system mounting hardware. Not available with Seat Sling.	

### Seat Option

Removable Aluminum Seat Pan (1/2" Shorter than Depth) (E2231)	\$300
Pan depth 1/2" shorter than Seat Depth	

### Wheelchair Drive Ready

Chair will ship from Ki Mobility with adaption kit installed for selected Alber system. Order system separately from Alber USA. Select Rear Seat Height (full profile selections only) in drive wheel size on Rear Seat Height chart (page 5). Requires Rear Anti-Tips. Not available with Height Adjustable Flip Back T-Arm.

e-motion Ready	N/C
twion Ready	N/C

## Backrest

### Back Post / Height Range / Back Height

Back Post	Price	Height Range	Back Height			
Standard	N/C	Short	8.5"	9.5"	10.5"	11.5"
		Medium	12.5"	13.5"	14.5"	15.5"
		Tall	16.5"	17.5"	18.5"	19.5"
Half-Folding	\$56	Short	12.5"	13.5"	14.5"	15.5"
		Tall	16.5"	17.5"	18.5"	19.5"
Angle Adjustable w/ Push Handle	\$195	Short	14"	15"	16"	
		Medium	16"	17"	18"	
		Tall	18"	19"	20"	

### Standard Back Post

Select option below only if a Standard Back Post option is selected on chart to the left

Straight with Push Handle	N/C
Straight without Push Handle	N/C
8 Degree Bend with Push Handle	\$33
Not available with Short Back Height Range	
Straight with Fold Down Push Handle	\$128
Not available with 350 lb Weight Capacity	

HCPCS codes provided are based on code verification by the PDAC or our interpretation of the code definitions.

Proper use of HCPCS codes does not ensure coverage or payment. For coverage information, verify the appropriate payer's coverage policy.

DCN0014.40 Pricing and specifications subject to change without notice.



Phone (800) 981-1540 | Fax (715) 254-0996  
sales@kimobility.com | www.kimobility.com



## Push Handle Options

**Not available with Straight Back Post with Fold Down Push Handle or 350 lb Weight Capacity**

Low Profile Push Handle \_\_\_\_\_ \$92  
2" shorter than standard push handles

## US Military Service Patches

**Attached only if ordered with Tension Adjustable Back Upholstery**

Army \_\_\_\_\_ Navy \_\_\_\_\_ Marines \_\_\_\_\_ Air Force \_\_\_\_\_  
Coast Guard \_\_\_\_\_ US Purple Heart \_\_\_\_\_ \$92  
Combo Army/Purple Heart \_\_\_\_\_ Combo Navy/Purple Heart \_\_\_\_\_  
Combo Marines/Purple Heart \_\_\_\_\_ Combo Air Force/Purple Heart \_\_\_\_\_  
Combo Coast Guard/Purple Heart \_\_\_\_\_ \$149

## Back Upholstery

**If selecting both upholstery and Axiom Back, the upholstery will be installed.**

Standard \_\_\_\_\_ N/C

**Not available with Short or Medium Back Height Ranges on 21" - 22" Seat Widths**

Tension Adjustable with Standard Cover (E2611) \_\_\_\_\_ \$345

Tension Adjustable with Air Mesh Breathable Cover (E2611) \_\_\_\_\_ \$405

Omit \_\_\_\_\_ (\$15)

## Footrest / Frame Type

### Frame Type

Swing Away \_\_\_\_\_ N/C  
Super Low - Swing Away \_\_\_\_\_ N/C  
70° Fixed Front \_\_\_\_\_ N/C  
80° Fixed Front \_\_\_\_\_ N/C

### Minimum Front Seat Height with Front Mount Hangers

Hanger Length	Short		Medium		Long	
Hanger Bend	70°	80/90°	70°	80/90°	70°	80°
Minimum Front Seat Height with Standard Selection	13.5"	13.5"	14"	15"	16"	17"
Minimum Front Seat Height with 3" Extension	14.5"	16"	16.5"	18"	18.5"	20"

### Hanger / Front Frame Bend

Frame	Hanger	60°	70°	80°	90°		Retail
Swing Away	Extension Tube Mount			1			N/C
	Front Mount			1	1		N/C
	Pro ELR						\$318
	Omit Hangers						(\$20)
Fixed	Extension Tube Mount			1			N/C

**1 Not available with 7" or 8" casters**

### PRO ELR Cover

**Available only on PRO ELR**

Gel Pad Covers (Pair) K0108 \_\_\_\_\_ \$436

## Seat to Footrest Length

**Select Extension and Seat to Footrest Length in row corresponding to desired Footrest. Footrest Length of at least 2.5" shorter than Front Seat Height recommended. Extension Tube Hangers and Fixed Front Frame measurements are based on 70° Hanger / Front Frame Bend.**

Footrest	Extension	Seat to Footrest Length											
Extension Tube Hangers (60°,70°,80°)	Short (11" - 15")	11"	11.5"	12"	12.5"	13"	13.5"	14"	14.5"	15"			
	Medium (13" - 17")	13"	13.5"	14"	14.5"	15"	15.5"	16"	16.5"	17"			
	Long (15.5" - 19.5")	15.5"	16"	16.5"	17"	17.5"	18"	18.5"	19"	19.5"			
Front Mount Hangers <sup>1</sup>		Standard Selections									Requires 3" Extension		
	Short Front Mount Hanger	4" <sup>2</sup>	4.5" <sup>2</sup>	5"	5.5"	6"	6.5"				10"	10.5"	11"
		7"	7.5"	8"	8.5"	9"	9.5"				11.5"	12"	12.5"
	Medium Front Mount Hanger	4" <sup>2</sup>	4.5" <sup>2</sup>	5"	5.5"	6"	6.5"	7"	7.5"		12"	12.5"	13"
		8"	8.5"	9"	9.5"	10"	10.5"	11"	11.5"		13.5"	14"	14.5"
	Long Front Mount Hanger <sup>2</sup>	5"	5.5"	6"	6.5"	7"	7.5"	8"	8.5"	9"	14"	14.5"	15"
		9.5"	10"	10.5"	11"	11.5"	12"	12.5"	13"	13.5"	15.5"	16"	16.5"
PRO ELR Low Pivot Setting	PRO ELR Low Pivot Setting Short (12" - 17.5")	12" - 17.5"											
	PRO ELR Low Pivot Setting Long (15" - 21")	15" - 21"											
PRO ELR High Pivot Setting	PRO ELR High Pivot Setting Short (10.5" - 15.5")	10.5" - 15.5"											
	PRO ELR High Pivot Setting Long (13" - 19")	13" - 19"											
Fixed Front Frame (70°,80°)	Short (11" - 15")	11.5"	12"	12.5"	13"	13.5"	14"	14.5"	15"				
	Medium (13" - 17")	13"	13.5"	14"	14.5"	15"	15.5"	16"	16.5"	17"			
	Long (15.5" - 19.5")	15.5"	16"	16.5"	17"	17.5"	18"	18.5"	19"	19.5"			

<sup>1</sup> See Minimum Front Seat Height chart above

<sup>2</sup> Available with 90° only

### 3" Extension

*Available only with Front Mount Hangers*

3" Extension	\$36
3" Extension (Provided as Parts)	\$36

### Footplates

Composite	N/C
<i>Not available with Front Mount Hanger</i>	
Composite Angle Adjustable (K0040)	\$200
<i>Not available with Front Mount Hanger or 14" Seat Width</i>	
Aluminum Angle Adjustable (K0040)	\$205
One Piece Flip Up Angle Adjustable (K0040)	\$200
<i>Not available with Front Mount Hanger or PRO ELR</i>	

### Hanger Release

*If no selection is made Classic Hanger Release will be used*

Classic	N/C
4-Way - In-Line	N/C
4-Way - Out	N/C

### Heel Loops

*Not available with One Piece Flip Up Angle Adjustable Footplate*

Heel Loops (E0951)	\$42
Adjustable Heel Loops (E0951)	\$51
Omit Heel Loops	N/C

### Calf Straps

Velcro Adjustable (K0038)	\$41
Padded Velcro Adjustable (K0038)	\$72
Bodypoint Padded AeroMesh (K0038)	\$128

### Residual Limb Support

	Limb Support	Price	Omit	Cover		Pad Size					
Left	Left Limb Support (E1020)	\$431	Omit Left Hanger	Smooth Cover Left	Air Mesh Cover Left	5X8 Pad Left Side	7X10 Pad Left Side	9x10 Pad Left Side	9x14 Pad Left Side	11x10 Pad Left Side	11x14 Pad Left Side
Right	Right Limb Support (E1020)	\$431	Omit Right Hanger	Smooth Cover Right	Air Mesh Cover Right	5X8 Pad Right Side	7X10 Pad Right Side	9x10 Pad Right Side	9x14 Pad Right Side	11x10 Pad Right Side	11x14 Pad Right Side

## Front Seat Height and Casters

### Caster Size / Front Frame Type / Front Seat Height

Select Front Seat Height in row corresponding to desired caster size. Note: Selections in first three Front Seat Height columns use Super Low Front Frame. Super Low Front Frame not available with Fixed Front Frame.

Caster Size	Front Seat Height													
	Uses Super Low Front Frame													
4"	13.5"	14"	14.5"	15"	15.5"	16"	16.5"	17"	17.5"	18"	18.5"	19"	19.5"	20"
5"	14.5"	15"	15.5"	16"	16.5"	17"	17.5"	18"	18.5"	19"	19.5"	20"	20.5"	
6"	15.5"	16"	16.5"	17"	17.5"	18"	18.5"	19"	19.5"	20"	20.5"	21"		
7"	17"	17.5"		18"	18.5"	19"	19.5"	20"	20.5"	21"				
8"	17.5"	18"	18.5"	19"	19.5"	20"	20.5"	21"						

### Casters

		Caster Size					
		Price	4"	5"	6"	7"	8"
Caster Type	.75" Rollerblade	N/C					
	.75" Lighted Rollerblade	\$77					
	1" Poly	N/C					
	1" Poly Aluminum	\$169					
	1" Pneumatic	\$92					
	1.5" Poly	\$60					
	1.5" Soft Roll Aluminum	\$212					
	2" Poly	\$97					
	2" Pneumatic w/Foam Insert	\$246					

### Maximum Seat Dump Reference

(Front Seat Height minus Rear Seat Height)

Seat Depth	14"	15"	16"	17"	18"	19"	20"
Maximum Dump Standard Caster Housing	1.5"	2"	2"	2"	2.5"	2.5"	2.5"
Maximum Dump Performance Caster Housing	3"	3"	3"	3.5"	3.5"	4"	4"

*Depending on configuration, chairs with Fixed Front Frame Type may achieve up to an additional .75"*



Phone (800) 981-1540 | Fax (715) 254-0996  
sales@kimobility.com | www.kimobility.com



## Forks / Stems

Best Fit	N/C
<i>Ki Mobility will pick Fork and Stem combination to optimize performance based on Caster Size and Front Seat Height</i>	
Standard Fork Stem	N/C
3/4" Longer Fork Stem	N/C
1 1/2" Longer Fork Stem	N/C
Frog Legs Suspension Fork	\$487
<i>Available only with 4", 5" or 6" Caster Sizes. Not available with Caster Pin Locks, 350 lb Weight Capacity, 2" Poly caster or 2" Pneumatic w/ Foam Insert caster.</i>	
Frog Legs II Suspension System	\$487
<i>Lightweight shock absorbing fork. Available only with 4", 5" or 6" Caster Sizes. Not available with Caster Pin Locks, 350 lb Weight Capacity, 2" Poly caster or 2" Pneumatic w/ Foam Insert caster.</i>	

## Caster Housing

Standard Housing	N/C
Performance Housing	\$51
<i>Not available with 350 lb Weight Capacity</i>	

## Fork / Stem Options

### Frog Legs Option

User Weight Under 80 lbs	N/C
User Weight 80-120 lbs	N/C
User Weight 120-160 lbs	N/C
User Weight 160-220 lbs	N/C
User Weight 220-260 lbs	N/C
User Weight 260-300 lbs	N/C

### Caster Pin Locks

Caster Pin Locks (K0073)	\$210
<i>Not available with Performance Caster Housing, 1 1/2" Longer Fork Stem or Frog Legs Fork</i>	

## Wheel Locks

### Wheel Lock

Push to Lock	N/C
Push to Lock Flush Mount	N/C
Pull to Lock	N/C
Low Profile Scissor Lock	\$72
<i>Not available with Low Poly, Full Poly or Sentinel Solid tires</i>	
Short Thro Scissor Lock	\$118
Drum Brake (E2228)	\$595
<i>Available only with 20", 22" and 24" MAXX Spoke wheels. Not available with Reclining Backrest, Straight without Push Handle or Straight with Fold Down Push Handle Back Posts, or Low Profile Push Handle. Axle is Quick Release.</i>	
Dual - Drum Brake with Push to Lock (E2228)	\$702
<i>Available only with 20", 22" and 24" MAXX Spoke wheels. Not available with Reclining Backrest, Straight without Push Handle or Straight with Fold Down Push Handle Back Posts, or Low Profile Push Handle. Axle is Quick Release.</i>	
Dual - Drum Brake with Pull to Lock (E2228)	\$702
<i>Available only with 20", 22" and 24" MAXX Spoke wheels. Not available with Reclining Backrest, Straight without Push Handle or Straight with Fold Down Push Handle Back Posts, or Low Profile Push Handle. Axle is Quick Release.</i>	
Omit	N/C

### Wheel Lock Options

Extension Handles (E0961)	\$81
<i>Available only with Push to Lock or Pull to Lock Wheel Locks</i>	
Grade Aids (E0974)	\$159
<i>Available only with Push to Lock Wheel Locks and Pneumatic or Pneumatic with Airless Insert tires</i>	

## Rear Seat Height and Wheels

### Wheel Size / Tire Profile / Rear Seat Height

Select Rear Seat Height in row corresponding to desired Wheel Size and Tire Profile. 14" Seat Depth not available with 24", 25" or 26" wheel sizes.

Wheel Size	Tire Profile	Rear Seat Height					
20"	Low	11.5"	12.5"	13.5"	14.5"	15.5"	16.5"
	Full	12"	13"	14"	15"	16"	17"
22"	Low	12.5"	13.5"	14.5"	15.5"	16.5"	17.5"
	Full	13"	14"	15"	16"	17"	18"
24"	Low	13.5"	14.5"	15.5"	16.5"	17.5"	18.5"
	Full	14"	15"	16"	17"	18"	19"
25"	Low	14"	15"	16"	17"	18"	19"
26"	Low	14.5"	15.5"	16.5"	17.5"	18.5"	19.5"
	Full	15"	16"	17"	18"	19"	20"

## Wheels

		Rear Wheel Size					
		Price	20"	22"	24"	25"	26"
Rear Wheel Type	Spoke	N/C					
	Mag	N/C					
	Maxx Spoke	\$62					
	Maxx Spoke	\$215					
	Superlight Spoke <sup>1</sup>	\$313				<sup>2</sup>	
	Spinergy Spox	\$938					

<sup>1</sup> Not available with 350 lb Weight Capacity

<sup>2</sup> Available only with Superlight and Plastic Coated Handrims

## Rear Tire Type

### Full Profile

Street Pneumatic 1 3/8" (E2211, E2212)	N/C
<i>Not available on 25" wheel size</i>	
Full Poly 1 3/8" (E2218)	N/C
<i>Not available on Superlight wheel or 25" or 26" wheel sizes</i>	
Pneumatic with Airless Insert 1 3/8" (E2211, E2213)	\$103
<i>Not available on Superlight wheel or 25" or 26" wheel sizes</i>	
Schwalbe HS-127 1 3/8" (E2211, E2212)	\$133
<i>Available only on 24" wheel size. Not available on Mag wheel.</i>	
Schwalbe Downtown 1 3/8" (E2211, E2212)	\$103

### Low Profile

Low Poly 1" (E2218)	\$56
<i>Not available on Superlight wheel, 25" or 26" wheel sizes or 350 lb Weight Cap</i>	
Sentinel Solid Tire 1" (E2218)	\$103
<i>Not available on Superlight wheel or 20" and 22" Mag wheels</i>	
High Pressure 1" (E2211, E2212)	\$103
<i>Not available on Mag wheel</i>	
Schwalbe Marathon Plus Evolution 1" (E2211, E2212)	\$144
<i>Not available on Mag wheel, 20" or 22" wheel sizes</i>	
Shox Solid Tire 1" (E2218)	\$103

## Handrims

### Standard Handrims

Aluminum Anodized	N/C
Superlight Aluminum Anodized	\$56
<i>Available only on 24" and 25" wheel sizes. Available only on MAXX Spoke or Superlight wheels.</i>	
Plastic Coated	\$110
Projection (8 Vertical Projections)	\$359
<i>Available only with full profile tires in combination with 22", 24", and 26" MAXX Spoke wheels, or 22" and 24" Mag wheels</i>	
Omit Handrim	N/C

### Ergonomic Handrims

*Not available with 20" or 26" wheels. Tab mount only available with 24" wheels.*

Lite Regular Grip	\$477
Standard Regular Grip	\$456
Lite Extra Grip	\$528
Standard Extra Grip	\$507
Lite Omit Grip	\$405
Standard Omit Grip	\$354

## Handrim Options

### Handrim Mount

Close Mount	\$31
<i>Chair will come with Standard Mount unless Close Mount is selected</i>	

### Micro-Grip

3M Micro Grip	\$72
---------------	------

## Spinergy Options

*Select spoke color*

Black Spokes	Red Spokes	Blue Spokes	White Spokes	N/C
--------------	------------	-------------	--------------	-----

## Axles

### Axles

*No selection needed with Drum Brake*

Quick Release	N/C
Quad Quick Release	\$185
<i>Not available with Mag or Spinergy wheels</i>	

## Rear Wheel Camber

*Combination of Standard and Adjustable Camber cannot exceed 4°. Selection will default to a max of 4° combined if exceeded.*

### Standard Camber

*Chair will be set up with this camber selection*

0° - Standard Camber	1° - Standard Camber	2° - Standard Camber
3° - Standard Camber	4° - Standard Camber	N/C

### Adjustable Camber

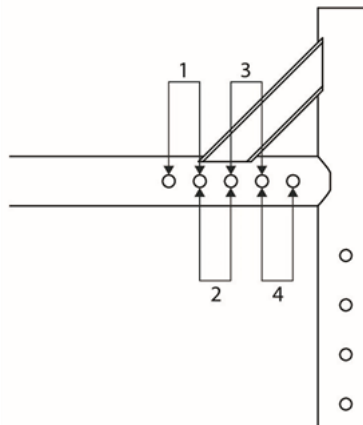
*Extra camber spacers mounted to the inside of the rear frame for later use*

0° - Adjustable Camber	1° - Adjustable Camber
2° - Adjustable Camber	3° - Adjustable Camber
4° - Adjustable Camber	N/C

## Center of Gravity Preset

*Extra camber spacers mounted to the inside of the rear frame for later use*

Position 1	Position 2	Position 3	Position 4	N/C
------------	------------	------------	------------	-----



## Armrests

Armrest Type	Length	Price
Height Adjustable T-Arm Tall (11.5"-15") E0973	Desk Full	\$323
Height Adjustable T-Arm (8.5"-13.5") E0973	Desk Full	\$323
Height Adjustable T-Arm Low (6.5"-10.5") E0973 <sup>1</sup>	Desk Full	\$323
Height Adjustable Flip Back T-Arm Tall (11.5"-15") E0973	Desk Full	\$338
Height Adjustable Flip Back T-Arm (9.5"-13.5") E0973	Desk Full	\$338

<sup>1</sup> Available only with Spinergy, Mag and MAXX Spoke Wheels. If requested configuration is unavailable, Standard Height T-Arm will be used.

<sup>2</sup> Not available with Seat Depths less than 16" or Angle Adjustable Back Posts

<sup>3</sup> Not available with Angle Adjustable Back Posts or Arm Pads

<sup>4</sup> Not available with 15" Rear Seat Height and 24" wheels

Armrest Type	Length	Price
Flip back (10.5") <sup>2,4</sup>	Desk Full	\$90
Swing Away (10.5"-12.5") E0973 <sup>3</sup>		\$241
Swing Away with Side Guard (10.5" - 12.5") E0973 <sup>3</sup>		\$359
Omit Armrests		N/C

### Arm Pads

Not available with Swing Away Armrests

Waterfall Arm Pad \$26

Available only with Height Adjustable T-Arm Tall, Height Adjustable T-Arm, and Height Adjustable T-Arm Low

## Accessories

### Removable Side Guard

Not available with T-Arms, Flip Back or Swing Away with Side Guard Armrests

Composite Side Guards (K0108)	\$159
Aluminum Straight - Black Matte (K0108)	\$210
Aluminum Straight - Match Frame Color (K0108)	\$261
Not available with Hydrographics	
Fixed Mount Fender Side Guards - Aluminum (K0108)	\$159
Not available with 24" wheel size in combination with 14" Rear Seat Height	
Fixed Mount Fender Side Guards - Carbon Fiber (K0108)	\$507
Not available with 24" wheel size in combination with 14" Rear Seat Height	
Aluminum Adjustable Fender w/Foam Pad - Black Matte (K0108)	\$292
Aluminum Adjustable Fender w/Foam Pad - Match Frame Color (K0108)	\$343
Not available with Hydrographics	
Carbon Fiber Adjustable Fender (K0108)	\$518

### Anti-Tip

Rear Anti-Tips (E0971)	\$160
Swing-In Anti-Tip Single - Left (E0971)	\$164
Not available with 350 lb Weight Capacity. Not available with left side O2 Holder.	
Swing-In Anti-Tip Single - Right (E0971)	\$164
Not available with 350 lb Weight Capacity. Not available with right side O2 Holder.	
Swing-In Anti-Tip Pair (E0971)	\$328
Not available with 350 lb Weight Capacity. Not available with Cane and Crutch Holder or O2 Holder.	
Omit	N/C

### Pelvic Positioning Belt

1 1/2" Auto Buckle Pelvic Positioning Belt (E0978)	\$87
1 1/2" Padded Auto Buckle Pelvic Positioning Belt (E0978)	\$179
2" Airline Buckle Pelvic Positioning Belt (E0978)	\$118
Small Bodypoint Evoflex (16-24") (E0978)	\$200
Medium Bodypoint Evoflex (19-29") (E0978)	\$200
Large Bodypoint Evoflex (25-37") (E0978)	\$200
Belt Mounting Band Clamp	\$36

### Other Accessories

Tool Kit	\$46
Removable Underseat Pouch	\$51
Pediatric Ki Mobility Backpack	\$51
Ki Mobility Backpack	\$80
Luggage Carrier	\$87
Not available with PRO ELR or Residual Limb Support	
Black Neoprene Impact Guards	\$97
Clear Spoke Guards (K0065)	\$123
Not available with Mag wheel	
Black Spoke Guards (K0065)	\$123
Not available with 20" wheel size or Mag wheel	
Cane and Crutch Holder	\$210
IV Pole	\$292
Available only with Standard Straight Back Posts	
Tipping Lever - Left Side	\$51
Not available with Transit Wheels or 350 lb Weight Capacity	
Tipping Lever - Right Side	\$51
Not available with Transit Wheels or 350 lb Weight Capacity	
O2 Holder - Left Side (E2208)	\$313
O2 Holder - Right Side (E2208)	\$313
Transit Wheels (K0108)	\$154
Not available with Step Tube, Rear Seat Heights less than 14.5" or 350 lb Weight Capacity	

## Color

### Gloss Finish

Black	N/C
Blue Skies	N/C
Bubblegum Pink	N/C
Candy Blue	N/C
Candy Purple	N/C
Candy Red	N/C
Copper	N/C
Granny Smith	N/C
Metallic Orange	N/C
Yellow	N/C

### Matte Finish

Military Green	N/C
Charcoal Gray	N/C
Emerald Green	N/C
Iridescent Burgundy	N/C
Iridescent Navy	N/C
Retro Red	N/C
Royal Blue	N/C
Shadow Black	N/C
Smooth White	N/C

### Hydrographics

*1 Select Hydrographics Base Color. Zebra not available in Black*

AOR1 (Desert Digital Camo)	NEXT Camo	
Pink Camo	Carbon Fiber <sup>1</sup>	
Muddy Girl	Zebra <sup>1</sup>	\$825

### Hydrographic Base Color

*Required with Hydrographics*

Black	Blue	Pink	Granny Smith	
Purple	Red			N/C

### Colored Anodizing Package

*Select desired color. If no selection is made, black will be used.*

	Option	Standard Caster Housing <sup>2</sup>	Caster Fork <sup>3</sup>	Axle Plate
	Retail	\$82	\$82	\$82
Color	Black <sup>1</sup>			
	Blue			
	Bright Green			
	Orange			
	Pewter			
	Pink			
	Purple			
	Red			

*1 Black is no charge*

*2 Available only if corresponding option selection was made*

*3 Not available with 2" wide casters, Frog Legs Suspension Fork or Frog Legs II Suspension System*



Catalyst Front Seat Height Matrix																				
4" Caster				5" Caster				6" Caster				7" Caster				8" Caster				
FSH	Super Low	Stem	Fork	FSH	Super Low	Stem	Fork	FSH	Super Low	Stem	Fork	FSH	Super Low	Stem	Fork	FSH	Super Low	Stem	Fork	
15	13.5	Std	4"	16	14.5	Std	4"	17	15.5	Std	5"	18	16.5	Std	6"	19	17.5	Std	6"	
15.5	14			16.5	15.5	3/4		17.5	16.5	3/4		18.5	17			19.5	18.5	3/4		
15.5 <sup>1</sup>	14 <sup>1</sup>			17.5	16	1 1/2		18.5	17	1 1/2		18.5	17.5	20.5		n/a	1 1/2			
16	14.5	3/4		16	14.5	Std	5"	17	15.5	Std	6"	19	18	3/4		19	17.5	Std	7"	
16.5 <sup>1</sup>	15 <sup>1</sup>			16.5	15			17.5	16			19.5	18			19.5	18			
17	15.5			16.5	15.5			18	16.5			20	18.5			20	18.5			
15.5	14	Std	5"	17	16	3/4		17.5	16.5	3/4		6"	18.5	17	Std	20.5	19	3/4		
16	14.5			17.5	16			18	17				19	17.5		19.5	18.5			
16	15			18	16.5			18.5	17.5				19.5	18		20	19			
16.5	15.5	3/4		16.5	15	Std	6"	18.5	17	1 1/2	7"		20	18.5	3/4	20.5	n/a	1 1/2		
17	15.5			17	15.5			19	17.5				19	18		21	n/a			
17.5	16			17.5	16			19.5	18				19.5	18.5		20.5	19			
16.5	15	Std	6"	17.5	16	3/4		6"	18	16.5		Std	7"	20	19	1 1/2				
17	15.5			18	16.5				18.5	17				20.5	n/a					
17	16			18.5	17				19	17.5				20	18.5					
17.5	16.5	18		16.5	19.5	18	20.5		19	1 1/2										
18	16.5	18.5		17	18.5	17.5	21		n/a											
18.5	17	19		17.5	3/4	7"														
18	16.5	Std	7"	18							16.5	Std	7"	19.5	18.5	3/4				
18.5	17			18.5							17			20	19					
18.5	17.5			19	17.5						19.5			18	1 1/2					
19	18	18.5		17.5	20						18.5									
19.5	18.5	19		18	20.5						19									
20	19	1 1/2		19.5	18.5	3/4					7"	21		n/a	3/4	7"				
				19.5	18	1 1/2					6" x 2" caster not available with 5" fork									
				20	18.5															
				20.5	19															

<sup>1</sup> Not available with 4 x 1.5" Soft Roll Aluminum

Seat heights with "FSH" heading available with Standard Front Frame. Seat heights with "Super Low" heading available with Super Low Front Frame. Actual seat height may vary depending upon configuration.